

Nonanatomic patterns for full cast gold crowns

G. J. Chiche, D.D.S.,* and A. J. Mendez, D.D.S., M.S.**
Louisiana State University, School of Dentistry, New Orleans, La.

The combination of anatomic-nonanatomic artificial teeth is a recommended posterior arrangement for complete denture occlusion.^{1,2} The advocated advantages over nonanatomic teeth arrangements include improved cusp efficiency, concentration of vertical forces, improved esthetics, and elimination of lateral planes.³⁻⁵

In situations in which an upper complete denture is occluded with mandibular cast gold crowns, this occlusal scheme is incorporated through the use of acrylic patterns.

TECHNIQUE

1. Select the appropriate denture teeth from accurate mesiodistal and buccolingual measurements.
2. Duplicate the occlusal surfaces in silicone putty material (Fig. 1).
3. Pour a thin mix of cold-curing acrylic resin (Duralay, Reliance Dental Mfg. Co.) inside the impression (Fig. 2).
4. After complete polymerization of the resin, sepa-

rate the pattern from the impression. Its thickness should be kept at a minimum (Fig. 3).

5. Wax the axial contours and the patterns in their final position (Fig. 4).
6. Complete the waxing of the crown (Fig. 5).
7. Invest the crowns and cast, and return them to the individual dies for final evaluation (Fig. 6).
8. The cemented crowns incorporate the appropriate occlusal scheme (Fig. 7).

REFERENCES

1. Payne, S. H.: A posterior set-up to meet individual requirements. *Dent Digest* 4:20, 1941.
2. Pound, E.: *Personalized Denture Procedures: Dentist's Manual*. Anaheim, Calif., 1973, Denar Corp., p 80.
3. Murrell, G. A.: The management of difficult lower dentures. *J PROSTHET DENT* 32:243, 1974.
4. Gronas, D. G., and Stout, C. J.: Lineal concepts for complete dentures. *J PROSTHET DENT* 32:122, 1974.
5. Becker C. M., Swoope, C. C., and Guckes, A. D.: Lingualized occlusion for removable prosthodontics. *J PROSTHET DENT* 38:601, 1977.

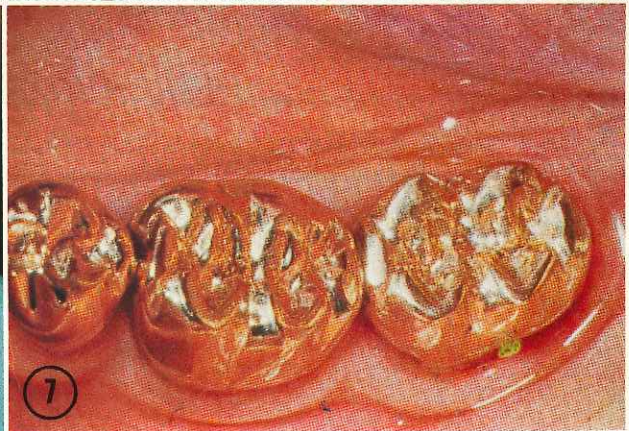
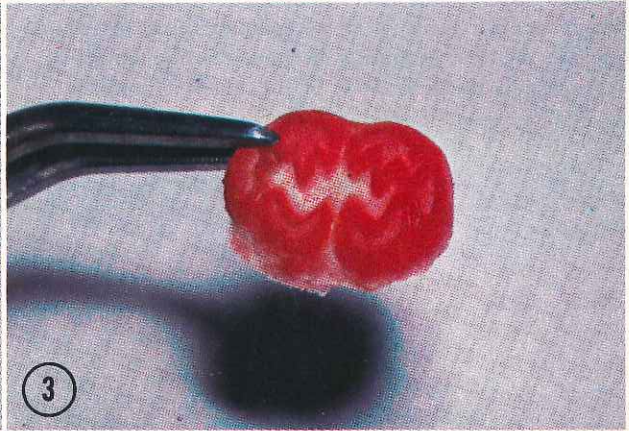
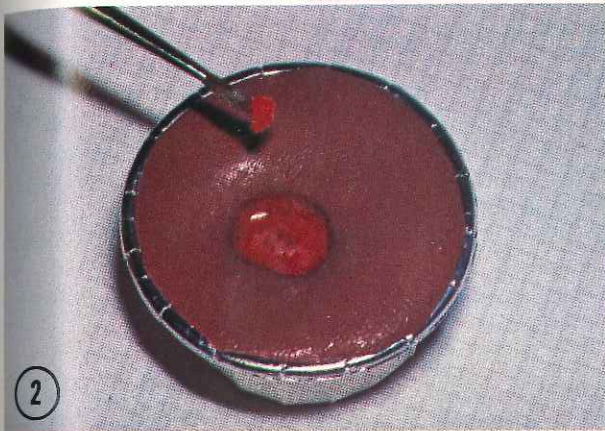
Reprint requests to:
DR. G. J. CHICHE
LOUISIANA STATE UNIVERSITY
SCHOOL OF DENTISTRY
NEW ORLEANS, LA 70119

*Assistant Professor, Department of Fixed Prosthodontics.
**Associate Professor, Department of Removable Prosthodontics.

- Fig. 1. Occlusal surfaces of selected teeth are duplicated in silicone putty.
- Fig. 2. Cold-cure acrylic resin is poured into impression.
- Fig. 3. Separated acrylic resin after polymerization.
- Fig. 4. Finalized patterns cemented together after axial contours developed.
- Fig. 5. Crown waxing has been finalized.
- Fig. 6. Cast crowns returned to individual dies.
- Fig. 7. Crowns cemented to appropriate occlusal scheme.

...ion. Its thickness
...3).
...e patterns in their
...rown (Fig. 5).
...return them to the
... (Fig. 6).
...rate the appropri-

...et individual require-
...ures: Dentist's Manu-
...p 80.
...ficult lower dentures. J
... concepts for complete
...74.
...es, A. D.: Lingualized
...s. J PROSTHET DENT



Figs. 1 to 7. For legends, see opposite page.